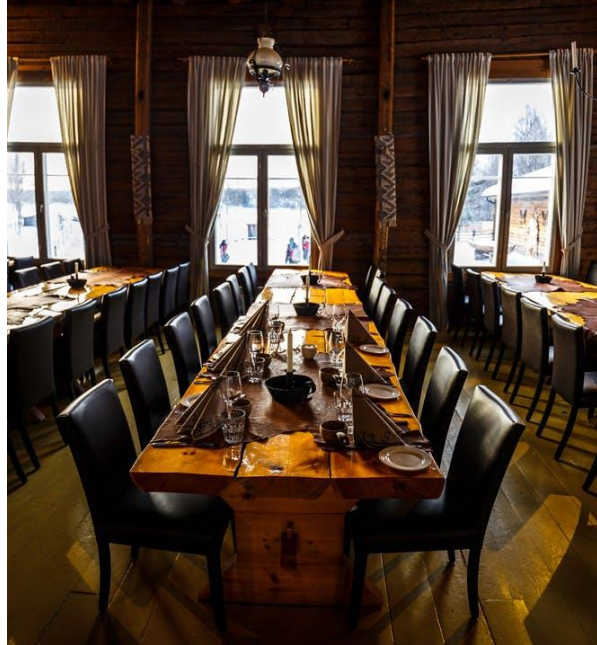




ULTERIOR
EVENTS

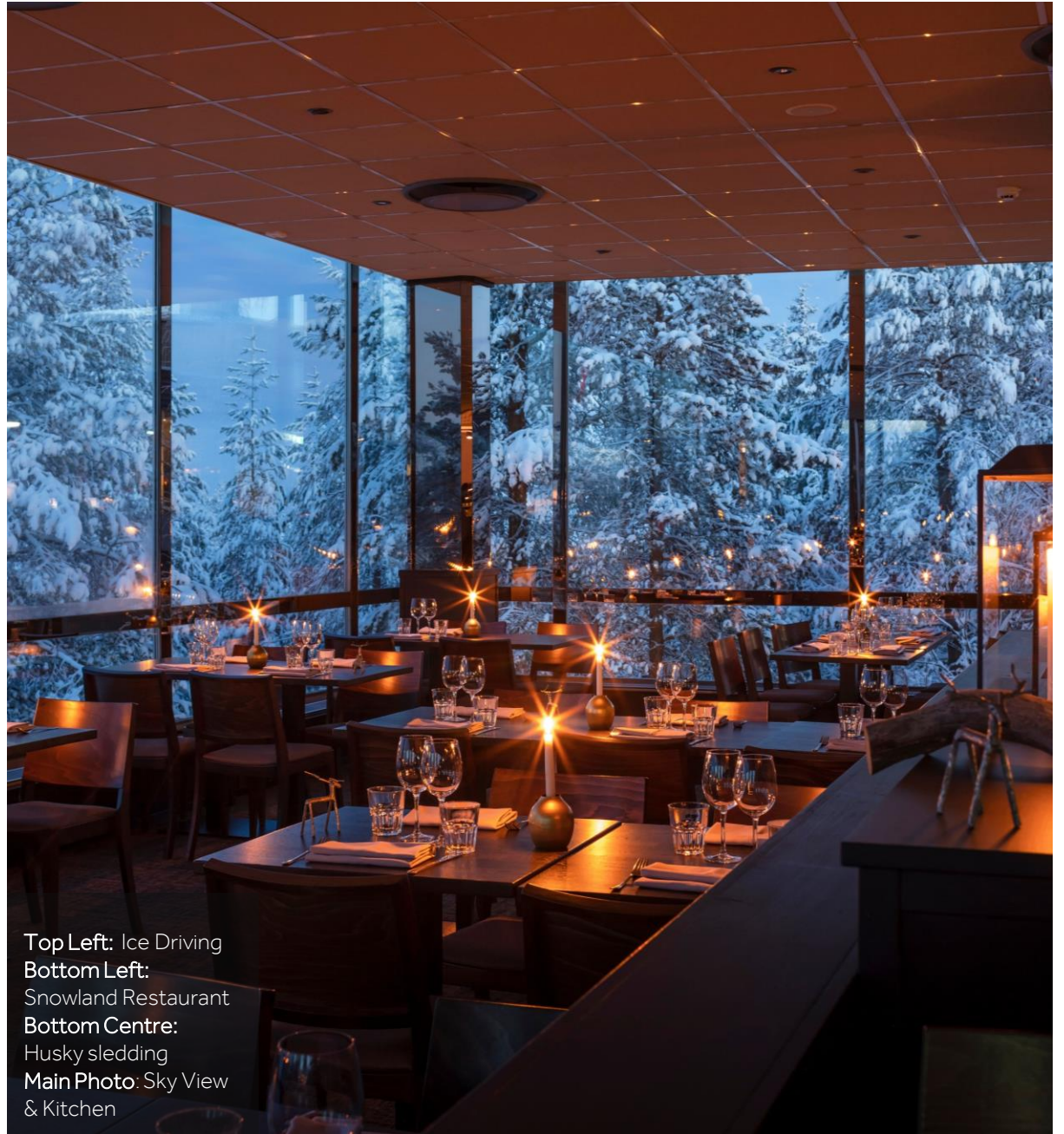
Let's Talk...

FINNISH LAPLAND



ULTERIOR
EVENTS

Top Left: Arctic Snow
Hotel
Bottom Left:
Snowmobile transfer
Bottom Centre:
Poropirtti
Main Photo: Reindeer
Farm



Top Left: Ice Driving
Bottom Left:
Snowland Restaurant
Bottom Centre:
Husky sledding
Main Photo: Sky View
& Kitchen

FULL STORY

SNOWMOBILE TRANSFERS

With a morning departure from London to Rovaniemi, we begin our Finnish Lapland experience with a snowmobile transfer from the airport to Poropirtti for a traditional Lappish welcome lunch located on the banks of the Ounasjoki river. After lunch, we sit astride our snow mobiles and continue the journey to the stunning [Arctic Snow Hotel](#), where we stay for the night in our framed glass igloos. On arrival to Arctic Snow Hotel, drinks are served in the Ice Bar followed by a private check in and time at leisure to explore the hotel facilities. For our first evening, we dine in Restaurant Kota, located on the hotel's lake shore. Specialising in mouth-watering glow-fried salmon, the blazing fire in the centre of the restaurant creates a toasty and impressive centre piece for the evening. After dinner, guests can head to the hotel Sky Bar for a nightcap or head straight back to their igloos for a night under the stars – and if they are lucky, catch a glimpse of the shimmering Northern lights.

ACCELERATE ACROSS THE FROZEN LAKES

We begin our second day with a delicious buffet breakfast in the Log Restaurant of the hotel. After which we swiftly check out and take a private transfer to a rally site where we're set to enjoy an adrenaline-filled activity behind the wheel! Thrill-seekers will never forget boosting around the frozen lakes under unapologetically speedy guidance from a professional instructor. With a few practice laps under belts, we're then set for the big competition and a chance to show each other who really is the boss! A short transfer away at Villa Maria is a well-deserved lunch.

BREATHTAKING PANORAMIC VIEWS

Post lunch, we transfer back to Rovaniemi for a private check in at the [Arctic Light Hotel](#), our home for the next two nights. Arctic Light Hotel was Lapland's first boutique hotel, an inviting mix of modern architecture and cosy local textiles and finishes. With an abundance of bars and shops surrounding the hotel, guests have plenty to do in their free time.

Following a private check in and time to settle in, we take a short private transfer to Sky Kitchen & View in Rovaniemi to dine. Frequently awarded Best Restaurant in Lapland, Sky Kitchen & View is known for its modern Northern cuisine and locally sourced fresh ingredients. Situated on top of Ounasvaara Hill, Sky Kitchen & View offers not only a feast on your plate, but a feast for the eyes with breath-taking panoramic views. After a sumptuous dinner, we take a private transfer back to the hotel to continue the night in the bar.

HUSKY AND REINDEER ADVENTURE

A Finnish buffet breakfast makes a strong start to the day. Then it's time to wrap up warm for a day visiting the Husky and Reindeer farms. Travelling by snowmobile we head through the magical winter wonderland to "Husky Farm" where we're met by a chorus of friendly barking hounds. The huskies will be harnessed in teams to take the group on a ride through the thick white snow. A truly magical experience that's followed by a chance to find out more about these beautiful creatures from the people who train and look after them.

SNOW DOME FOR DINNER

We take lunch at a traditional Lappish log house before continuing our snowmobile escapade to the Reindeer Farm. Here, we're shown how to drive a sleigh, before setting off on a short but ever so sweet adventure. A ceremonious welcome awaits our return – with the handing out of reindeer licences! Later, we return to Rovaniemi by snow mobile transfer to cosy ourselves at leisure ahead of dinner.

Our final supper feels spectacularly fitting of such a brilliant trip – as we transfer to Snowland Restaurant to dine in a dome built entirely of snow and ice. Thermal overalls are handed out on arrival, so everyone is comfortable for the extraordinary dining experience of Lappish flavours set amongst atmospheric lights, lanterns and fireplaces. After dinner, a private coach transfer returns us to Rovaniemi where guests can sink into a cloud-like bed or venture into the city to enjoy their final night.

This is an example of an itinerary for 40 people (20 rooms). All our itineraries are completely bespoke and subject to suitability and availability.

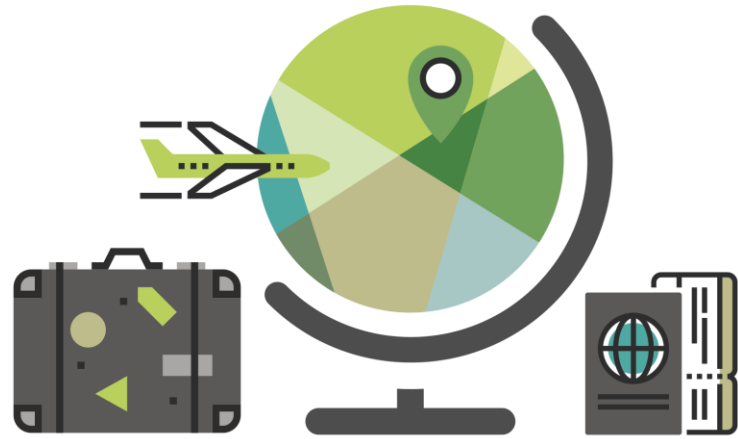


ULTERIOR
EVENTS

DAY BY DAY



<i>Date</i>	<i>Morning</i>	<i>Noon</i>	<i>Night</i>
Day 1	<p>Guests to check in for flight to Rovaniemi. <i>A member of Ulterior staff will be at the airport to meet guests and hand out their travel documents.</i></p> <p>Morning departures to Rovaniemi from the UK.</p>	<p>Arrive at Rovaniemi.</p> <p>Snowmobile transfer to Poropirtti for a welcome lunch.</p> <p>Snowmobile transfer to Arctic Snow Hotel for a welcome drink in the Ice Bar followed by a private check in.</p>	<p>Dinner at the hotel in Restaurant Kota.</p> <p>Late night drinks in the Sky Bar.</p> <p>Overnight at Arctic Snow Hotel.</p>
Day 2	<p>Breakfast at leisure in the Log Restaurant.</p> <p>Check out of Arctic Snow Hotel. <i>Guests luggage will be transferred to Arctic Light Hotel.</i></p> <p>Private transfer to rally site for Ice Driving activity.</p>	<p>Ice driving activity with professional instructor followed by a competition.</p> <p>Lunch in Villa Maria and winner announced from the Ice Driving activity.</p> <p>Private transfer to Arctic Light Hotel for a private check in followed by time at leisure.</p>	<p>Private transfer to dinner at Sky View & Kitchen.</p> <p>Return transfer back to the hotel.</p> <p>Overnight at Arctic Light Hotel.</p>
Day 3	<p>Breakfast at leisure in the hotel.</p> <p>Short walk from the hotel to Safari club to collect the Snowmobiles.</p> <p>Snowmobile Safari to Husky Farm where guests will have a Husky ride and learn about their training.</p>	<p>Lunch at Husky Farm in a traditional Lappish house.</p> <p>Transfer by Snowmobile to Reindeer farm .</p> <p>Return to the hotel by Snowmobile. Late afternoon at leisure.</p>	<p>Private transfer to farewell dinner.</p> <p>Gala night at Snowland in an exclusive snow dome.</p> <p>Private transfer back to the hotel.</p> <p>Overnight at Arctic Light Hotel.</p>
Day 4	<p>Breakfast at leisure in the hotel and check out.</p>	<p>Return flights from Rovaniemi to the UK.</p>	



GET IN TOUCH. LET'S TALK ABOUT YOUR NEXT INCENTIVE. THROW AROUND SOME IDEAS. OR JUST PICK OUR BRAIN.

T: +44 (0)3333 110810 **W:** www.ulteriorevents.co.uk **E:** hello@ulteriorevents.co.uk

CASE STUDIES

